

The West Linn High School Performing Arts Department Presents



BOOK  
DENNIS KELLY

MUSIC & LYRICS  
TIM MINCHIN

ROALD DAHL'S  
**Matilda**  
THE MUSICAL



ROALD DAHL'S  
**Matilda**  
THE MUSICAL

Directed, Choreographed & Costumed by  
**ANNIE KAISER**

Set & Lighting Design by  
**JON ARES**

Vocal Direction by  
**KATEY SIMMONS**

Music Director & Conductor  
**KEVIN EGAN**

Sound Design & Engineering by  
**NICOSIA VICK BEAUDIN  
& ALEX OGREN**

“Loud” Choreographed by  
**CHRISTINE  
GREENHALGH-SCHULTZ**

Production Stage Manager  
**ALLIE HENRY**

ROALD DAHL'S MATILDA THE MUSICAL is presented through special arrangement with Music Theatre International (MTI).  
All authorized performance materials are also supplied by MTI.  
[www.mtishows.com](http://www.mtishows.com)

*ROALD DAHL'S MATILDA THE MUSICAL is performed with a 10-minute intermission.*

Latecomers will be seated at the discretion of the House Manager.

The taking of photographs or the use of recording devices of any type is strictly prohibited by the licensing agreement with the Rightsholder. Cameras will be confiscated by House Management. As a courtesy to other audience members and the performers, please turn off all cellular phones and pagers. Food and drink is not allowed in the auditorium.

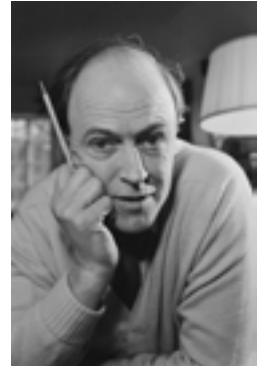
WEST LINN HIGH SCHOOL 5464 WEST A STREET, WEST LINN, OR 97068  
[WWW.WLHSTHEATRE.ORG](http://WWW.WLHSTHEATRE.ORG)

## About the Author. . .

Roald Dahl was a British novelist, short-story writer, poet, screenwriter, and wartime fighter ace of Norwegian descent. His books have sold more than 250 million copies worldwide, and he has been called “one of the greatest storytellers for children of the 20th century”.

Dahl was born in Wales to affluent Norwegian immigrant parents, and spent most of his life in England. He served in the Royal Air Force during the Second World War; he became a fighter pilot and, subsequently, an intelligence officer. He rose to prominence in the 1940s with works for children and adults and became one of the world’s best-selling authors.

Dahl’s short stories are known for their unexpected endings, and his children’s books for their unsentimental, macabre, often darkly comic mood, featuring villainous adult enemies of the child characters. His children’s books champion the kindhearted and feature an underlying warm sentiment. His works for children include *James and the Giant Peach*, *Charlie and the Chocolate Factory*, *Matilda*, *The Witches*, *Fantastic Mr. Fox*, *The BFG*, *The Twits*, *George’s Marvellous Medicine*, and *Danny, the Champion of the World*.



Dahl’s children’s works are usually told from the point of view of a child. They typically involve adult villains who hate and mistreat children, and feature at least one “good” adult to counteract the villain(s). These stock characters are possibly a reference to the abuse that Dahl stated that he experienced in the boarding schools he attended. Dahl’s books see the triumph of the child; children’s book critic Amanda Craig said, “He was unequivocal that it is the good, young and kind who triumph over the old, greedy and the wicked.” Anna Leskiewicz in *The Telegraph* wrote “It’s often suggested that Dahl’s lasting appeal is a result of his exceptional talent for wriggling his way into children’s fantasies and fears, and laying them out on the page with anarchic delight. Adult villains are drawn in terrifying detail, before they are exposed as liars and hypocrites, and brought tumbling down with retributive justice, either by a sudden magic or the superior acuity of the children they mistreat.”

Receiving the 1983 World Fantasy Award for Life Achievement, Dahl encouraged his children and his readers to let their imagination run free. His daughter Lucy stated “his spirit was so large and so big, he taught us to believe in magic.”

(Courtesy of Wikipedia)

*Those who don't believe in magic will never find it.*



**LIKE BOOKS TRANSPORTED MATILDA...**  
*...we can help transport you to a new home!*

**Katie Walsh**

Mortgage Lender | NMLS 285140  
The Walsh Team | Guild Mortgage  
C 503.956.4304  
katie@guildmortgage.net

**Heather Robbins**

Principal Broker  
Robbins Realty Group  
C 503.807.5189  
heather@robbinsrealtygroup.com

**Guild**  
mortgage



Katie Walsh, NMLS # 285140 Phone: 503.956.4304 | This is not a commitment to lend. Guild Mortgage Company NMLS #3274 OR ML-176, Equal Housing Opportunity. 5400 Meadows Rd Suite 120, Lake Oswego, OR 97035 | [nmlsconsumeraccess.org](http://nmlsconsumeraccess.org)

# The Company

Mum 1, Big Kid, Henchman 3	<b>Makena Big John</b>
Nurse, Big Kid	<b>Lea Blaskower</b>
Dad 3, Big Kid, Henchman 1	<b>Jonathan Beldman</b>
Tommy	<b>Max Burden</b>
Mrs. Wormwood	<b>Sophia Burden*</b>
Bruce	<b>Josh Caveney</b>
Mum 4, Big Kid	<b>Lucille Clemo</b>
Miss Honey	<b>Sofia Gomez*</b>
Mr. Woomwood	<b>Thomas Greyerbiehl*</b>
Big Kid, Cook	<b>Saige Heiden</b>
Miss Trunchbull	<b>Ian Krubel</b>
Lavender	<b>Ella Kuntz</b>
Alice	<b>Luci LaViolette</b>
Amanda	<b>Hanna Layton</b>
Erica	<b>Lily McCarthy</b>
Dad 2, Big Kid, Sergei	<b>Evan McCreary*</b>
Mum 2, Mrs. Phelps	<b>Avery Mickey</b>
Matilda	<b>Ava Neudeck*</b>
Dad 1, Escapologist	<b>Mason Nuttbrock</b>
Doctor, Big Kid	<b>Emerson Parker</b>
Children's Entertainer, Big Kid,	
Henchmen 2	<b>Holden Peterson</b>
Big Kid, Acrobat	<b>Misha Rana</b>
Dad 4, Michael	<b>Riley Schreiber*</b>
Hortensia	<b>Rowan Seachrist</b>
Rudolpho, Big Kid	<b>Cadence Tillman*</b>
Nigel	<b>Jack Walters</b>
Big Kid	<b>Juniper Whitlock</b>

*\* Denotes Member of Thespian Troupe 1915, an International Theatre Honor Society.*

# Musical Numbers

## Act I

*Miracle*– **Kids, Parents, Matilda, Ensemble**  
*Naughty* - **Matilda**  
*Acrobat Story I* - **Acrobat, Escapologist**  
*School Song* - **Kids**  
*Pathetic* - **Miss Honey**  
*The Hammer* - **Trunchbull, Kids**  
*Naughty Reprise (Superglue)* - **Matilda**  
*Chokey Chant* - **Kids**  
*Loud* - **Mrs. Wormwood, Rudolpho, Ensemble**  
*Acrobat Story II*  
*This Little Girl* - **Miss Honey**  
*Bruce* - **Kids**  
*All I Know* - **Mr. Wormwood**

## Act II

*Telly off & Lavender's Newt*  
*When I Grow Up* - **Kids, Miss Honey, Matilda**  
*Acrobat Story III*  
*I'm So Clever* - **Mr. Wormwood**  
*Acrobat Story IV (I'm Here)* - **Escapologist, Matilda**  
*The Smell of Rebellion* - **Trunchbull, Kids, Matilda, Miss Honey**  
*Quiet* - **Matilda**  
*My House* - **Miss Honey, Escapologist**  
*Revolting Children* - **Kids**  
*Priyatna Paznakomitsa* - **Sergei**  
*They Had Found Each Other*  
*Bows* - **Company**

# Pit Orchestra

**Claire Hunsaker, Katie Olson, Natalie Oltmans - Flute**

**Bar Rozenhaimer, Eloise Guarisco - Clarinet**

**Millie Frankle, Aiden San Nicolas - Alto Saxophone**

**Caleb Kirkland - Soprano Saxophone/Tenor Saxophone**

**Gabe Wenig, Parker McCord - Trumpet**

**David Buttson, Eli Hall - Trombone**

**Molly Ruff - Tuba**

**Sophie Ellis - Percussion**

**Jake Frazier - Drum Set**

**Olive Trone, Isabella Guerrero - Cello**

**Daphne Titterington, Sydney Bierman - Bass**

**Becky Chelson - Keyboards**

**Kevin Egan - Conductor & Musical Director**



# Who's Who in the Company...



## **JONATHAN BELDMAN**

This is Jonathan's, a freshman here at West Linn High School, first musical. He's excited for more experiences in theater and to continue doing musicals through his high school journey. Besides the musical, Jonathan is also a tenor voice in the Chamber Choir here at West Linn. Throughout his middle school years he participated in choir, performed in All State, and was a part of singing the National Anthem at his 8th grade graduation. He has previous experience in competitive gymnastics, which has helped him with learning choreography faster and continuing to work even when things get hard. He is looking forward to improving his voice and acting skills through theater and the rest of high school.



## **LEA BLASKOWER**

Lea is a freshman at West Linn High School. She was recently in the Middle School Musical production of *Seussical the Musical* where she portrayed the role of a Bird Girl no 4. Outside of theater, Lea has played competitive volleyball for the last 4 years and loves to write. Lea has been performing her whole life, not only doing plays and musicals but also singing and ballet when she was younger. She has been included in multiple productions and can't wait to continue acting and performing.



## **MAX BURDEN**

Max is a freshman at West Linn High School. He recently competed in the National Performing Arts Festival at Universal Studios Orlando. He was last seen in the productions of *Seussical the Musical* and *Shrek*. He has been playing piano for 6 years and is currently in the Cantus Choir at West Linn High School. He studies musical theater at the Spotlight Musical Theater Academy where he has been for 3 years and still pursues his love for acting!



## **MAKENA BIG JOHN**

Makena is a senior and a part of Thespians Troupe 1915. She has been on the West Linn Theater stage for two years, is currently a T.A. for the Chamber Choir, and is in Symphonic Choir. Makena was last seen on stage as a daughter in *The Pirates of Penzance*. She has been in choir since second grade, is a part of Oregon Repertory Youth Signers, and toured Europe with Oregon Ambassador of Music. Makena hopes to continue to be involved in musical theater and choir as she heads into college.

# Who's Who cont'd. . .



## **SOPHIA BURDEN**

Sophia, a junior at West Linn High School, is an inducted member of Thespian Troupe 1915 and a member of the Symphonic Choir and Fresh Pitch. She is honored to play the role of Mrs. Wormwood in the production of *Matilda the Musical*. She was last seen in the one-act, *Anybody for Tea*, portraying the character, Lucy Long. Some of her favorite roles include Isabel from *The Pirates of Penzance*, Shrek from *Shrek the Musical Jr.*, and Martha Cox from *Disney's High School Musical*. Sophia has been studying voice at Vox Northwest with Angela Niederloh and musical theater at Spotlight MTA. She has been playing piano for 11 years and singing for much more. She hopes to continue learning more about the performing arts.



## **JOSH CAVENEY**

Josh Caveney is a freshmen at West Linn High School. He has been involved in singing and theater since he was in 2nd grade. Most recently, Josh was in the Middle School Musical's production of *Seussical the Musical* as Horton the Elephant; *Shrek* at Lakewood Theater as Donkey, and will be playing boy in *Dragons Love Tacos*. He enjoys playing guitar, drums, and singing. Josh is very excited to be a part of this production.



## **LUCILLE CLEMO**

Lucille is a Junior at West Linn High School. She has always loved being on stage and performing. Last year Lucille was a part of *Once Upon a Mattress* and *A Midsummer Night's Dream* at Wilsonville High School. Lucille performed in *Disney's High School Musical* her seventh grade year and that's when she knew she loved musical theater! Lucille is also involved in choir. She is currently in Symphonic Choir at West Linn, has gone to 4 honor choirs (Nationals and Northwest), has been in many smaller vocal ensembles, and has even traveled to Europe with the Oregon Ambassadors of Music. Lucille's would like to study music therapy in college. She would like to use her own talents towards helping those in need.

# **BELLAGIOS PIZZA**

*The Very Best*

## **503.557.1406**

**1880 Willamette Falls Dr**  
West Linn, OR 97068

**SOFIA GOMEZ**

Sofia, a Junior at West Linn High School and an inducted member of Thespian Troupe 1915, is thrilled to be back on stage as Miss Honey this year.

Sofia played Mabel in last years production of *The Pirates of Penzance*. She has appeared in many other productions around Portland including at The Lakewood Center for the Arts, The Northwest Children’s Theater, Stumptown Stages, Oregon Children’s Theater, and more. Sofia has been doing theater for 13 years and has been taking voice lessons at VOX Northwest for 4 years. She has studied acting with WLHS, NWCT, OCT, Spotlight MTA, and hopes to continue pursuing musical theater and her education in the arts through college. Some of Sofia’s favorite productions include *Shrek the Musical Jr* as Fiona, *The 25th Annual Putnam County Spelling Bee* as Marcy Park, and *The Pirates of Penzance*. She is delighted to be a part of this production.

**THOMAS GREYERBIEHL**

Thomas is a Junior here at West Linn High School. This is his second musical at WLHS. Last year he played the role of Fredrick in *The Pirates of Penzance*.

Outside of theater he enjoys playing soccer, basketball, and guitar. Thomas is extremely excited about this opportunity and cannot wait for everyone to see it.

**SAIGE HEIDEN**

Saige is a Freshman and is working to become a member of Thespian Troupe 1915 at West Linn High School. She studies in the Dual Language program and is fluent in Spanish. She has been training at

Spotlight Musical Theatre Academy for 4 years. At Spotlight, she has participated in their travel troupe where she competed in the National Performing arts festival twice in Walt Disney World. On top of that she has been playing piano for 6 years and guitar for 2. Saige has been featured in multiple local theater productions and can’t wait to continue her journey through music and theatre.

**IAN KRUBEL**

Ian is a Junior here at West Linn High School. He is involved in the Thespians Troupe 1915 and West Linn’s Symphonic Choir. Ian was last seen

in the West Linn High School productions of *The Pirates of Penzance*, *This Random World*, and *Anybody For Tea*. Additionally, he was in two Middle School Musical productions, playing Charlie in *Charlie and the Chocolate Factory*, and Troy Bolton in *Disney’s High School Musical*. Aside from acting, Ian also enjoys learning about biology, space, and watching and critiquing movies.

# Who's Who cont'd. . .



## **ELLA KUNTZ**

Ella is a Senior this year at West Linn High School. She loves being a part of leadership for West Linn High School's Symphonic Choir and Fresh Pitch A Cappella. Ella has previously been seen on stage in *Bye Bye Birdie*, *Disney's High School Musical*, and *The Pirates of Penzance*. In her free time, she enjoys playing soccer and spending time with her close friends and family. Ella hopes to attend school for nursing, and one day become a nurse practitioner.



## **LUCI LAVIOLETTE**

Luci, a Freshman, has been pursuing theater and the performing arts for 5 years, and is currently in Bella Forte Choir here at West Linn High School. She has participated in a number of honor choirs and has taken acting classes with Oregon Children's Theater. Recently, Luci performed in the Middle School Musical's production of *Seussical the Musical*. She hopes to continue studying theater and singing throughout her high school career.



## **HANNA LAYTON**

Hanna is a Sophomore and is so excited to be part of her first show at West Linn High School. She is currently training with OCT's Young Professionals, as well as participating in West Linn's dance team and Symphonic Choir. Hanna is so excited about all these new opportunities, and is so grateful to start the school year with this amazing cast.



## **LILY MCCARTHY**

Lily, a freshman, has a long history in the performing arts. She was a competitive dancer for 6 years, as well as a performer in productions such as *Snow White as Dopey*, and *Lilo and Stitch* as Lilo. Lily was cast in several commercials as a young child. Other credits include, *You're a Good Man, Charlie Brown* as Woodstock, *Seussical the Musical* as Sour Kangaroo, and *Shrek Jr* as Pied Piper. She is thrilled to be cast as Erica in *Matilda The Musical*.



## **EVAN MCCREARY**

Evan is a Senior this year. He has the incredible opportunity of serving as co-president of Thespian Troupe 1915 here at West Linn. He last took the stage as Gary in *This Random World* and had supporting roles in the original productions *Teenhood: The Tale of Bobby Dink* and *Sal* and "Is This Brownsville?" Additionally,

cont'd. . .

he is a member of the Symphonic Choir. He aspires to make the most of his senior year by continuing to learn and grow both as a performer and a person. His dreams are to pursue a career in the performing arts after high school.



**AVERY MICKEY**

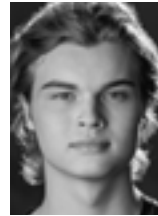
Avery is a Senior this year and has been performing since middle school. She performed in the Middle School Musical production of *Disney's High School Musical* and WLHS's *The Pirates of Penzance*. She is currently a part of West Linn High School's Symphonic Choir and a cappella group, Fresh Pitch. She enjoys playing piano and guitar in her free time. In the future she plans to attend college and continue her music education, as well as start her journey to become an occupational therapist.



**AVA NEUDECK**

Ava is a Junior and is honored to be playing the role of Matilda. She is an inducted member of Thespian Troupe 1915 and a member of the West Linn Symphonic Choir. She also studies voice with VOX Northwest Voice Studio and is a member of Oregon Children's Theatre's Young Professional Company. Previously, she played the role of Ruth in *The Pirates Of Penance*, Grace Smythe in *Stumptown*

Stage's *A Christmas Carol*, and Alice in Lakewood Center for the Arts' *Matilda The Musical*. Ava has also competed at the National Festival of the Arts both for group and solo performances.



**MASON NUTTBROCK**

Mason is a student of the class of 2024 and an active participant in the arts programs at West Linn High School. This is his first year involved in the theater program but he has been in Fresh Pitch, and last year, sang in the symphonic choir for *The Pirates of Penzance*. Additionally, he performed in *Disney's High School Musical* as Ryan, and *Charlie and the Chocolate Factory* as Willy Wonka. His singing achievements include performing at the state level in multiple choirs, placing first in the large ensemble and small ensemble categories. He plans to keep performing in the theater and choir programs as well as pursuing a career in pharmaceuticals. He hopes to eventually attend Oregon State University.



**EMERSON PARKER**

Emerson is a Sophomore who last performed in West Linn's one-act, *Any Body for Tea*. She was also Jo March in Spotlight Theater's production of *Little Women*. Emerson has been taking piano lessons for ten years, and is currently in Symphonic choir. This is Emerson's first musical and she couldn't be happier with her theatre experiences at West Linn.

# Who's Who cont'd. . .



## **HOLDEN PETERSON**

Holden, a Junior at West Linn High School, is part of the Symphonic Choir and was last seen on stage as The Sergeant of Police in *The Pirates of Penzance*. Holden has also been a part of the productions *Willy Wonka and the Chocolate Factory* and *Disney's High School Musical* in middle school. He has been taking acting classes since he was 5.



## **MISHA RANA**

Misha, a Freshman at West Linn High School, is so excited to be a part of *Matilda the Musical* this year. This is Misha's second time on stage, having portrayed the Mayor of Whoville in last year's Middle School Musical's production of *Seussical the Musical*. Aside from partaking in musicals, she has been immersed in the world of music from a young age. She has studied piano for 7 years, violin for 4, and has loved singing for as long as she can remember.



## **RILEY SCHREIBER**

Riley is a Senior at West Linn High School and an inducted member of Thespian Troupe 1915. He is a writer, filmmaker, actor, and all around storyteller. After high school he plans to pursue

screenwriting and film production. He has been a part of two of West Linn High School Musicals including *Chicago: High School Edition*, and *The Pirates Of Penzance*. He is a member of the Oregon Children's Theatre Young Professionals Company, and has been for three years. He wrote, acted in, and produced the one-act play *The Alcohol*, which was performed as a part of Oregon Children's Theatre Breaking Character: Frames Of Mind in 2020. This year, Riley was the assistant stage manager for Oregon Children's Theatre's production of *Twelfth Night*.



## **ROWAN SECHRIST**

Rowan is a Sophomore here at West Linn High School. *Matilda The Musical* is her first musical production at West Linn. Last year, she appeared as Nia in the WLHS short film, "Is This Brownsville?" She has been singing and playing instruments since she was young, and enjoys passing time by writing her own music.



## **CADENCE TILLMAN**

Cadence is a Senior here at West Linn High School and an inducted member of Thespian Troupe 1915. They have studied acting for 2 years and is currently in Symphonic Choir and Fresh Pitch. Last year, they performed in *The Pirates of Penzance* and *Murder in Little Grimley* as Joyce during "Shorts 22." Pre-

cont'd. . .

viously, they have performed in *Albert Herring* with the Portland State University Opera, and many times with the Portland Boychoir between 2012 and 2018. Additionally, they were a finalist in the 2022 Regional Acting Competition. They hope to do future performances with the PSU opera as well as future high school shows.



### **JACK WALTERS**

Jack, a freshman, made his stage debut in *Seussical the Musical* and subsequently would play the title role in *Shrek Jr.* He has had a fasci-

nation with the stage since his early years and is beyond excited to jump into the high school fray. He has a long road ahead of him and is eager to make his mark on the West Linn High School Performing Arts Department.



### **JUNIPER WHITLOCK**

Juniper, a Junior, has studied acting at West Linn High School for three years, and is also currently in choir. She has enjoyed dance lessons, drama

classes and singing from a very young age. This marks Juniper's first stage performance.

## **Production**



### **ALLIE HENRY**

Allie is a Junior here at West Linn High School. Last year, she was as an Assistant Stage Manager for *The Pirates of Penzance* and *Any Body For*

*Tea*. This is her first show a Production Stage Manager and she is looking forward to continuing learning about technical theater in the future. Allie's prior experiences with theater include the Middle School Musical productions of *Willy Wonka and the Chocolate Factory* and *Disney's High School Musical*.



### **GRACIE FAUST**

Gracie is a Junior at West Linn High School and an inducted member of Thespian Troupe 1915. Gracie has been involved in technical theater since Fresh-

man year. Credits include, sound design for the radio play, *The Hitchhiker*; properties manager for *The Pirates of Penzance* and *This Random World*; and production designer for "Is This Brownsville?". Gracie looks to work on more WLHS productions in the future, and hopes to continue to study the many facets of technical theater beyond high school.

# **MUSIC & ARTS PARTNERS: FILLING THE GAP.**

**MAP and the West Linn Community Grant Program donated \$1500 towards the wireless microphone system rental for this production.**

Over \$94,000 has helped support the WLHS Performing Arts and auditorium through Music and Arts Partners (MAP) in the past 21 years from grants, direct donations, concession profits and naming of WL Heritage Seats in the auditorium. Recent grants have funded costume design, a new black scrim for the stage, two new acoustic shells, \$750 grant was for a dust collection unit for the scene shop's new table saw to improve student health and safety, and a Voice/dialect/text workshop. Nearly \$230,000 has been received by all WLHS arts programs since 1995.

Funding from WL Heritage Seats donations and from the 2006 Sebastian Challenge, provided extras for the new auditorium. A baby grand piano for the stage, new lighting equipment, follow spots, lobby chimes/monitor, one more choral shell, sound mixing equipment and wireless headsets have been added solely with Heritage Seat funds.

You can help by purchasing and naming a WL Heritage Seat in the auditorium. Application forms for individual seats are available in the lobby or at [www.musicandartspartners.org](http://www.musicandartspartners.org).

***Have a show on us! Purchase a West Linn Heritage Seat and get two free tickets to any theatre performance in 2022/23!***

In June 2018, MAP awarded \$5500 in scholarships to graduating seniors in the arts at West Linn HS and Wilsonville HS, which included a \$1000 Morris Family Theatre Scholarship to WLHS senior and Thespian Troupe 1915 Co-President Brady McDevitt. Other WLHS seniors awarded scholarships were Sheridan Hardy (Morris Band), Claire Newrones, Luukas Lemetyinen, Elizabeth Herrick, and Lauren Griffith. Applications for 2019 MAP scholarships will be available on the MAP website and in the WLHS Career Center in winter of 2019.

District-wide, over \$875,000 has been granted by MAP to all 16 schools, to help fill the funding gaps for arts in our schools. A volunteer, non-profit organization, MAP welcomes your support to benefit this school and any other school your children may attend.

Membership forms are available at the MAP table in the lobby, at the web site [www.musicandartspartners.org](http://www.musicandartspartners.org) or call 503-636-4443 for more information.

***Please Visit***

***[www.musicandartspartners.org](http://www.musicandartspartners.org)  
for more information, and links to the arts programs  
in West Linn-Wilsonville!***





# WLWV MAP HERITAGE SEATS

## WEST LINN HIGH SCHOOL

Honor a student, your family, a West Linn High School staff member, create a memorial or donate to an auditorium endowment fund.

WLWV MAP Heritage Seats at West Linn High School has been created to raise money for the 600 seat West Linn High School auditorium. These additional funds are used to keep the facility in a state-of-the-art condition by paying for specialty items such as lighting, sound equipment and furnishings.

### HOW TO DONATE:

#### Seat Sponsorship:

Put your name, group name, or the name of anyone you wish to honor on a seat in the WLHS auditorium.

Seats will be named with a brass plate on the armrest for the life of the seat. In addition, you can choose the specific seat or seats that you want to sponsor.

#### General Donations:

General Donations are also accepted for the Auditorium Endowment Fund. Funds help support the purchase of speciality equipment such as:

- Lighting
- Sound Equipment
- Microphones
- Furnishings
- Lobby Chimes
- Dressing Room Mirrors

To sponsor a seat or make a donation, return a completed form with your tax deductible check payable to:

**WL Heritage Seats/MAP**  
**P.O. Box 532**  
**West Linn, OR, 97068**

SPONSOR NAME \_\_\_\_\_

PHONE \_\_\_\_\_

EMAIL \_\_\_\_\_

ADDRESS \_\_\_\_\_

CITY \_\_\_\_\_

STATE \_\_\_\_\_ ZIP \_\_\_\_\_

#### CHECK THE APPROPRIATE BOXES:

- |                                      |       |   |            |
|--------------------------------------|-------|---|------------|
| <input type="checkbox"/> One Seat    | \$150 | <input type="checkbox"/> General Donation | \$ _____   |
| <input type="checkbox"/> Two Seats   | \$275 | <input type="checkbox"/> Donation to a    | _____      |
| <input type="checkbox"/> Three Seats | \$400 | memorial seat                             | NAME _____ |
| <input type="checkbox"/> Four Seats  | \$500 |   |            |

TOTAL DONATION AMOUNT \$ \_\_\_\_\_

#### SEAT NAMEPLATE TEXT:

LINE 1 \_\_\_\_\_

LINE 2 \_\_\_\_\_

LINE 3 \_\_\_\_\_

#### NAMEPLATE SUGGESTIONS:

- Line 1: Name of family, student, teacher or anyone you wish to honor  
 Line 2: Description, group or association to WLHS community  
 Line 3: First year of sponsorship, date of graduation, years of service



QUESTIONS?  
Visit [musicandartspartners.org](http://musicandartspartners.org) or contact  
[jennylevers@yahoo.com](mailto:jennylevers@yahoo.com)



# For the Production...

DIRECTOR, CHOREOGRAPHER, COSTUME DESIGNER.....	Annie Kaiser
“LOUD” CHOREOGRAPHER.....	Christine Greenhalgh Schultz
VOCAL DIRECTION .....	Katey Simmons
MUSIC DIRECTOR/CONDUCTOR .....	Kevin Egan
REHEARSAL PIANIST/PIT KEYBOARD.....	Becky Chelson
PRODUCTION STAGE MANAGER .....	Allie Henry
ASSISTANT STAGE MANAGER.....	*Gracie Faust
FLYPERSON.....	Alyssa Chang
STAGEHANDS .....	Maggie MacKenzie, Claire Peate
WARDROBE, HAIR & MAKEUP MISTRESS .....	Larkin Kuehn
WARDROBE, HAIR & MAKEUP .....	Elizabeth Meyers, Cadence Cox
SET DESIGNER .....	Jon Ares
SET CONSTRUCTION/PAINTING.....	*Ava Neudeck, Lindsey Glen, Ronin Coxwell, *Olive Dotson, Elizabeth Meyers, Emma Martson, Alexander Linsky, Mariel Garcia, Jack Walters, *Sofia Gomez, Carnie Macom, Cadence Cox, Quincy Brown, Alyssa Chang, Elliot Cole, Larkin Kuehn, Miles Muller, Alex Ogren, Claire Peate, *Malaikie Ruirie, Arden Snavelly, Cooper Yeager, Allie Henry.
PROPERTIES .....	Grace Sato, *Olive Dotson, Gabrielle DeClark
LIGHTING DESIGNER.....	Jon Ares
LIGHT BOARD OPERATOR.....	Ethan Chenevert
FOLLOWSPOTS.....	Keegan Cook, *Chelsea Duncan
SOUND DESIGNER .....	Nicosia Vick Beaudin
SOUND ENGINEER .....	Alex Ogren
MICROPHONE TECH .....	*Micah Goodman
SOUND SUPERVISOR .....	Steven Beckingham
PERFORMING ARTS COORDINATOR .....	Annie Kaiser
THEATRE ARTS PROGRAM DIRECTOR.....	Steven Beckingham
TECHNICAL DIRECTOR .....	Jon Ares
HOUSE MANAGER.....	*Hailey Cyphers, Jesika Conner
CONCESSIONS COORDINATOR.....	Saleen Chenevert
BOX OFFICE .....	Annie Kaiser & members of <i>Thespian Troupe 1915</i>
SCENIC ILLUSTRATIONS.....	Genevieve Eldien
PROJECTED ART & ANIMATIONS .....	Masha Galtseva
POSTER & PROGRAM DESIGN .....	Steven Beckingham

\* Denotes Member of *Thespian Troupe 1915*, an **International Theatre Honor Society**.

***Happy Valley***

9993 SE 82nd Ave  
Happy Valley, OR  
503 774-1101



***Fisher's Landing***

1801 SE 164th Ave  
Vancouver, WA  
360 828-7515

Home Cooking Served Daily Since 2016

*Tualatin Location Coming Soon*

**Open Everyday 7am-3pm**

Bring in this ad and receive a complimentary homemade breadpudding  
No purchase necessary. Expires 11/30/2022



**Finest, Freshest, Prepared Daily**

Order Online at [www.BajaFreshLO.com](http://www.BajaFreshLO.com)

17805 SW 65<sup>th</sup> Ave, Lake Oswego  
(I-5 & Boones Ferry)

503-620-6732

Bring this Ad & Receive our FRESH Made Pronto Guacamole Free  
No Purchase Necessary. Expires 11/30/22

Introducing

THE **LAB**

AT YOUTH MUSIC PROJECT

Learn sound design, music production, live audio mixing, composition, music video editing, and more!

**Youth Music Project**

Music Lessons for Kids & Teens

Guitar	Vocals
Drums	Glee Club
Violin	Rock Band
Piano	Tools of Rock
Ukulele	Early Childhood
Electric Bass	Custom Classes

TUITION ASSISTANCE AVAILABLE!

[YouthMusicProject.org/WestLinnHS](http://YouthMusicProject.org/WestLinnHS)

503.616.5967 | 2015 8th Ave., West Linn

Sweetbriar  
Veggies

Est. 2021

@sweetbriarveggies

[SomethingBluePhotography.com](http://SomethingBluePhotography.com)

Book your session online or come  
to the Studio and Portrait Garden for a mini tour.



Denyce

503-232-6836

[info@sbluephoto.com](mailto:info@sbluephoto.com)



Connect with Nature

A Local Flock of 6 Portland Area Locations

[www.BackyardBirdShop.com](http://www.BackyardBirdShop.com)



## *Special Thanks!*

The WLHS Admin Team,  
Alice Anne Diehl, Rich  
Craghead and the entire  
Custodial Staff, Joe  
Monnahan and Hometown  
Sports, Chris Bergstrom,  
Peter Horne, Emily Muzica,  
Katy Coleman, Lisa Bennett,  
Megan Kaiser.

---

Check out the rest of the WLHS Theatrical Season!



# AUTOGRAPHS

# SAFE SPACE



*Our theatre is a safe space for all people, no matter their race, religion, gender identity, sexual orientation, ability, age, or background.*

