

WEST LINN HIGH SCHOOL PERFORMING ARTS PRESENTS

PIPPIN

BOOK BY ROGER O. HIRSON
MUSIC & LYRICS BY STEPHEN SCHWARTZ



Nov. 2,4,9,10,11 2023
CURTAIN 7PM

WLHS PAC. 5464 WEST A STREET. WEST LINN, OR. 97068

PIPPIN

BOOK BY ROGER O. HIRSON
MUSIC & LYRICS BY STEPHEN SCHWARTZ

Directed by
STEVEN BECKINGHAM

Set & Lighting Design by
JON ARES

Vocal Direction by
ANNIE KUBITSCHK

Music Director & Conductor
KEVIN EGAN

Costume Design by
ANNIE KAISER

Choreography by
JOANNA SIMNITT

Sound Design & Engineering by
**ALEX OGREN &
LUKAS BONO TAVARES DAVIS**

Production Stage Manager
ALLIE HENRY

PIPPIN is presented through special arrangement with Music Theatre International (MTI).
All authorized performance materials are also supplied by MTI.
www.mtishows.com

PIPPIN is performed with a 10-minute intermission.

Latecomers will be seated at the discretion of the House Manager.
The taking of photographs or the use of recording devices of any type is strictly prohibited by the licensing agreement with the Rightsholder. Cameras will be confiscated by House Management. As a courtesy to other audience members and the performers, please turn off all cellular phones and pagers. Food and drink is not allowed in the auditorium.

WEST LINN HIGH SCHOOL, 5464 WEST A STREET, WEST LINN, OR 97068
WWW.WLHSTHEATRE.ORG

About the Show & Authors. . .

Pippin is a 1972 musical with music and lyrics by Stephen Schwartz and book by Roger O. Hirson. Bob Fosse, who directed the original Broadway production, also contributed to the libretto. The musical uses the premise of a mysterious performance troupe, led by the Leading Player, to tell the story of Pippin, a young prince on his search for meaning and significance. The ‘fourth wall’ is broken numerous times during most traditional productions.

The protagonist, Pippin, and his father, Charlemagne, are characters derived from two historical figures of the early Middle Ages, though the plot is fictional and presents no historical accuracy regarding either. The show was partially financed by Motown Records. As of April 2019, the original run of Pippin is the 36th longest-running Broadway show.

Ben Vereen and Patina Miller won Tony Awards for their portrayals of the Leading Player in the original Broadway production and the 2013 revival, respectively, making them the first actors to win Tonys for Best Leading Actor and Best Leading Actress in a Musical, for the same role. The 1972 production won 9 Tonys total.

Stephen Lawrence Schwartz (born March 6, 1948) is an American musical theatre lyricist and composer. In a career spanning over five decades, Schwartz has written such hit musicals as *Godspell* (1971), *Pippin* (1972), and *Wicked* (2003). He has contributed lyrics to a number of successful films, including *Pocahontas* (1995), *The Hunchback of Notre Dame* (1996), *The Prince of Egypt* (1998, music and lyrics), and *Enchanted* (2007).

Roger Overholt Hirson (May 5, 1926 – May 27, 2019)[1] was an American dramatist and screenwriter best known for his books of the Broadway musicals, *Pippin*, for which he was nominated for a Tony Award,[2] and *Walking Happy*. He contributed extensively for original television anthology series episodes since the 1950s and also wrote the screenplays or stories for several prominent films such as *The Bridge at Remagen* (1969).

(Courtesy of Wikipedia)

From the Director. . .

No matter what version you see (or read), *Pippin* is a wild head trip of entertainment, wonder, cheekiness, and beautiful charm. And this is what allured me to it. Quite frankly, it is a tough show to conceptualize. Set in an alternate 780 AD, written in 1972, juxtaposed with a theatre troupe breaking the fourth wall with contemporary English language. . . where does one start with such an extraordinary pudding? I did not want to replicate the “circus” theme of the 2013 Broadway revival for multiple reasons. So, I married two things: the love and thrill of being a part of a theatre troupe, and my remembrances of being an over-confident, ambitious, but brave, 19-20 yr-old, seeking to make his mark. This show is about a passionate and virtuosic Leading Player, bound by the “Gods” of entertainment, romanticism, luck, and glory, directing her troupe of skilled professionals to put on the most astonishing theatrical display yet. And whether there is a technical fail, or a missed entrance, or an actor leaving the troupe, the “show” must go on. An alternate story of Pepin the Hunchback is the vehicle by which the Leading Player and troupe strut their stuff..telling us that we will always have “illusion, fantasy, to study.” In the end, our hope is that you take from it what you will. Thank you for joining us.

- Steven Beckingham



Real estate without all the drama

Call us today! We'll help with all of your real estate needs!

Katie Walsh

Senior Loan Advisor, NMLS 285140
Certified Divorce Lending Professional, CDLP
The Walsh Team | Guild Mortgage
C 503.956.4304
kwalsh@guildmortgage.net

Heather Robbins

Principal Broker
Robbins Realty Group
C 503.807.5189
heather@robbinsrealtygroup.com

Guild
mortgage



Katie Walsh, NMLS # 285140 Phone: 503.956.4304 | Our office is located at: 21780 Willamette Dr, West Linn, OR 97068 | This is not a commitment to lend. Guild Mortgage Company NMLS #3274 OR ML-176, Equal Housing Opportunity | nmlsconsumeraccess.org

The Company

Leading Player	Sofia Gomez*
Pippin	Mason Nuttbrock
King Charlemagne	Holden Peterson
Lewis	Ian Krubel*
Fastrada	Sophia Burden*
Berthe	Ava Neudeck*
Catherine	Grace Boyer
Theo	Leo Wilson

And a BAND OF PLAYERS who play all other roles:

Lucy Lorenzen
Jack Deason
Jack Walters
Josh Caveney
Misha Rana
Lucille Clemo*
Lucia LaViolette*
Rowan Sechrist
Hanna Layton
Max Burden
Jori Brady
Olivia Burden
Lily McCarthy
Lea Blaskower
Saige Heiden

** Denotes Member of Thespian Troupe 1915, an International Theatre Honor Society.*

Musical Numbers

Act I

Magic to Do - **Leading Player & Players**

Corner of the Sky - **Pippin**

War is a Science - **Charlemagne, Pippin, & Soldiers**

Glory - **Leading Player & Soldiers**

Simple Joys - **Leading Player**

No Time at All - **Berthe & Players**

With You - **Pippin**

Spread a Little Sunshine - **Fastrada**

Morning Glow - **Pippin, Leading Player, & Players**

Act II

Opening Act 2 - **Players**

The Right Track - **Leading Player & Pippin**

There He Was - **Catherine**

Extraordinary - **Pippin**

Love Song - **Cartherine & Pippin**

I Guess I'll Miss the Man - **Catherine**

Finale/Theo's Corner - **Leading Player, Pippin, Theo & Players,**

Bows - **Company**

Pit Orchestra

Claire Hunsaker - Piccolo and Flute

Colin Bowyer, Nicole Beltman - Flute

Kate McLellan - Oboe & English Horn

Eloise Guarisco - Clarinet

Lucas Hatfield - Clarinet & Bass Clarinet

Harrison Coller, Parker McCord - Trumpet

Connor Tallman, Eli Hall - Trombone

Sophie Ellis, Sam LaViolette - Percussion

Jaiden Griffin - Drum Set

Leesha DenHartigh, Zach Jordan, Midori Mehandjiysky,

Carly O’Hair, Emily Pierce, Harula Sakiyama - Violin

Olive Trone, Corbin Atchley - Cello

Daphne Titterington, Sydney Bierman,

Steven Walker, Sid Sundaram - Bass

Naomi Laviolette, Andrew Bray, Henry Hall-Brown - Keyboards

Kevin Egan - Conductor

Special Thanks!

The WLHS Admin Team, Alice Anne Diehl, Rich Craghead and the entire Custodial Staff, Jim Schamberg, Broadway Rose Theatre, Laura Layton, Alma and Ramiro Gomez, Dan Boyer, Tod “Jeff” Rams, Patricia Nuttbrock, Courtney Blaskower, Shana Sechrist, April Krubel.

Who's Who in the Company...



LEA BLASKOWER

Lea, a sophomore, has studied acting at West Linn High School for a year now. Lea was last seen on stage as the nurse and big kid for the production of *Matilda*. In middle school, Lea was seen on stage as one of Mayzie's birds in *Seussical the Musical*. Lea has been taking acting, voice, and dance classes through her life. She has been a part of Acting Regionals, and looks forward to be participating in the future.



GRACE BOYER

Grace, a junior at West Linn High School, is thrilled to take part in West Linn High School's production of *Pippin* as Catherine. She enjoys participating in the Symphonic and Fresh Pitch choirs, as well as being a TA for the Bella Forte choir. Previously, Grace participated in multiple school plays prior to starting high school, three summer programs with the Sleepy Hollow Children's Theater Workshop, and performed in Lakewood Theaters production of *Beauty and the Beast Jr*. She has also studied dance at both the studio and high school level, participating in multiple competitive dance teams over the years. She hopes to have the opportunity to take part in other productions at West Linn High School throughout the rest of her high school career.



SOPHIA BURDEN

Sophia, a senior at West Linn High School, is an inducted member of International Thespian Troupe 1915 and a member of the Symphonic Choir and Fresh Pitch. She is honored to play the role of Fastrada in *Pippin*. She was last seen in, "Pinocchio" portraying the character Foxy at the Broadway Rose Theatre Company. Some of her favorite roles include Isabel from "The Pirates of Penzance," Mrs. Wormwood from "Matilda the Musical," and Wednesday Addams from "The Addams Family." She competed at the National Performing Arts Festival with her troupe from Spotlight MTA and won an award for Outstanding Character Performance. She also went to the State competition for Thespians in solo musical and group acting. Sophia is currently studying voice at Vox Northwest. She has been playing piano for 12 years and singing for much more. As she goes into the next parts of her life, she hopes to continue working in the performing arts.

Who's Who cont'd. . .



MAX BURDEN

Max is thrilled to be a part of the West Linn High School musical this year! He has been studying musical theater at Spotlight Musical Theatre

Academy since 2020. He was recently seen as Tommy in Matilda and Uncle Fester in the Addams Family.



OLIVIA BURDEN

Olivia is a freshman who is stoked to be in her first WLHS musical production. She is working towards being inducted into the Thespians Troupe

'1915. She is taking on her first in school acting class and Bella Forte. Previously, Olivia Burden has been seen in musical productions such as The Little Mermaid as Sebastian, The Addams Family as Grandmama, and Seussical as Young Kangaroo. Outside of theatre, Olivia has passion for water polo and she has gone to Olympic Development Camps and the Junior Olympics.



JORI BRADY

Jori, a freshman, is excited to play in the ensemble for Pippin. She has loved drama and singing since she was young and has taken both singing and

acting lessons. This year, she is in Bella Forte choir and is taking the Acting I class. She has been seen before in the ensemble for Suessical, as Leeward in The Little Mermaid, and as a silly girl in Beauty and the Beast.



JOSH CAVENEV

Josh is a sophomore at West Linn High School, and has been acting since 8th grade as Horton the Elephant in Seussical the musical. Josh has also

done shows with Lakewood theater as Beast in Beauty and The Beast and with Oregon Children's Theatre as Boy in Dragons Love Tacos. Josh is in Symphonic choir and is a part of Thespian Troupe 1915. Josh is very happy to be apart of Pippin the musical. for vocal choral intensive. Lucille is going to continue music after high school and is hoping to get a degree in music therapy or special education.

ActiveEDGE
WELLNESS CENTER

503-387-5449
info@activeedgewellness.com

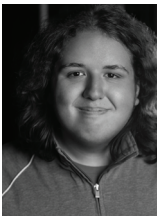
A black rectangular box containing the logo for ActiveEDGE Wellness Center. The logo features the word "ActiveEDGE" in a large, bold, white sans-serif font, with "WELLNESS CENTER" in a smaller, white, all-caps sans-serif font below it. At the bottom of the box, the phone number "503-387-5449" and the email address "info@activeedgewellness.com" are listed in a small white font.



LUCILLE CLEMO

Lucille, a senior inducted into troupe 1915, has always loved being on stage and performing. Last year Lucille was a part of Matilda here at West Linn.

Sophomore year Lucille was a part of two shows at Wilsonville High School: Once Upon A Mattress and A Midsummer Night's Dream. Lucille performed in High School Musical the Musical her seventh grade year. Lucille is also extremely involved in choir, she is currently in symphonic at West linn and in Pacific Youth Choir in Portland. She has gone to four honor choirs, has been in multiple smaller vocal ensembles, and went to Boston Conservatory last summer



JACK DEASON

Jack, a senior, returned to acting last year. He has been participating in West Linn High School's performing arts for roughly a year now. This will

be the first full length production he has been involved with since elementary school. Jack is taking both Acting II and Acting III this year.



SOFIA GOMEZ

Sofia, a senior at and a co-president for Thespian Troupe 1915, is thrilled to be back on the West Linn High School stage as Leading Player! Sofia

played Miss Honey in last year's production

of Matilda. Sofia has appeared in several productions around Portland including at The Lakewood Center for the Arts, The Northwest Children's Theater, Stumptown Stages, Oregon Children's Theater, Broadway Rose, and more. Sofia has been doing theater for 14 years and has been taking voice lessons at VOX Northwest for over 5 years. She has studied acting with West Linn High School, NWCT, OCT, Spotlight MTA, the Bridgetown Conservatory of Musical Theatre and hopes to continue pursuing musical theater and her education in the arts through college. Some of Sofia's favorite productions she's been in include The Mad Ones as Samantha Brown, The 25th Annual Putnam County Spelling Bee as Marcy Park, and Matilda as Miss Honey and is delighted to now be in the cast of Pippin!



SAIGE HEIDEN

Saige, a sophomore, has learned and practiced musical theater at Spotlight Musical Theatre Academy for 4 years. There she participated in their

travel troupe where she competed in the National Performing Arts Festival twice at Walt Disney World. Saige was last seen on stage as Feste in the West Linn High School production of Twelfth night. Saige has been featured in multiple local theater productions and can't wait to continue her journey through music and theatre!

Who's Who cont'd. . .



IAN KRUBEL

Ian, a senior at West Linn High School, is an inducted thespian in the Thespians Troupe 1915 and is vice president of the West Linn high symphonic choir. Ian was last seen in West Linn High school productions such as Pirates of Penzance, This Random World, and in Matilda as Mrs. Trunchbull.



LUCIA LAVIOLETTE

Lucia, a sophomore and a member of International Thespian Troupe 1915, is currently in Symphonic Choir here at West Linn High School and ORS Youth Choir. She has dance training in ballet, jazz, contemporary, lyrical, and irish. She was previously seen in The Odyssey as Circe and Penelope, Twelfth Night as Tobi Belch, Matilda: the Musical as Alice, and Seussical: The Musical as Sour Kangaroo. Lucia studies voice with Jennifer Davies, and is working on writing music and practicing guitar.



HANNA LAYTON

Hanna is thrilled to be a dance captain and cast member of Pippin the Musical. She is currently a member of International Thespian Troupe 1915, as well as Symphonic and Fresh Pitch choir. Previously, Hanna performed with the Portland Opera and the National Performing Arts Festival. She was last seen on stage as Amanda Thripp in last year's Matilda the Musical. Outside of school, she studies voice with Angela Neiderloh and is a member of Oregon Children Theater's Young Professionals Company. Hanna cannot wait to continue her studies of the performing arts in the near future.



LUCY LORENZEN

Lucy is a freshman and is honored to be in her first West Linn High School production. Previously, Lucy has been seen in other productions such as Ariel in The Little Mermaid, A hyena in Lion King, and Wickersham in Seussical. She is a member of the Thespian Troupe 1915 and hopes to get inducted. She is taking Acting I and currently is in West Linn's freshman choir, Bella Forte. Lucy attends voice lessons at VOX vocal studio with Matthew Hayward and intends to continue throughout highschool.





LILY MCARTHY

Lily is a sophomore and this is her second musical at West Linn High School. She was last seen in “Matilda The Musical”. Prior to this, Lily performed in the musicals “Seussical”, “Shrek”, and “You’re a Good Man, Charlie Brown”. Lily has studied dance for many years, including ballet, jazz, tap and hip-hop, was on the District Dance Team, and is a co-dance captain for Pippin! Last winter Lily was awarded an Honorable Mention for a Comedy Duo at the Acting Regionals. Lily loves performing and hopes to continue her passion for years to come at West Linn High School.



AVA NEUDECK

Ava, a senior, is honored to be playing the role of Berthe. She is an inducted member of Thespian Troupe 1915 and a member of the West Linn Symphonic Choir. She studies voice with VOX Northwest Voice Studio and is a member of Oregon Children’s Theatre’s Young Professional Company. Previously at West Linn High School, she played the role of Matilda in “Matilda”, and Ruth in “Pirates Of Penance”. She has also performed as Grace Smythe in Stumptown Stages “A Christmas Carol” and Alice in Lakewood Center for the Arts “Matilda”. Ava hopes to pursue musical theatre in college.



MASON NUTTBROCK

Mason, a senior at West Linn High School, began his acting career in the middle school production of “High School Musical the Musical” as Ryan. He has also participated in multiple past productions of the school such as the Escapologist in “Matilda” and as a part of the chorus in “Pirates of Penzance”. Mason has pursued his passion for singing in West Linn’s excellent choir programs, performing at the state level multiple times, and placing first in several categories in 2022. Mason now takes up a leadership role and has continued to hone his skills in singing and teaching. Beyond High School, he plans to work towards a career in aviation, possibly through aviation curriculums with nearby community colleges.



HOLDEN PETERSON

Holden, a senior at West Linn High School, has been in the Symphonic Choir for three years. He has taken Acting, and the Advanced Dramatic Literature class. Holden was last seen on stage as Duke Orsino in “Twelfth Night”, the ensemble of “Matilda”, and the Sergeant of Police in “The Pirates of Penzance”. Holden hopes to continue expressing his creative side in College by studying film and television.

Who's Who cont'd. . .



MISHA RANA

Misha, a sophomore at West Linn High School, is thrilled to be a part of Pippin the Musical! This is Misha's third time on stage; she previously appeared as the Mayor of Whoville in "Seussical the Musical" and The Acrobat in "Matilda", respectively. Misha's musical experience includes 8 years of piano and 1 year of professional voice training. She has also sung with Portland's Pacific Youth Choir, performing three times with the Oregon Symphony. Misha has recently joined West Linn High School's symphonic choir.



ROWAN SECHRIST

Rowan, a junior at West Linn High School, has been singing and acting her whole life and enjoys writing music in her spare time. Rowan last appeared in the West Linn's production of "Twelfth Night" as Andy. She has also been in the production "Matilda", and the original short film "Is This Brownsville?". Rowan studies voice with Matthew Hayward at VOX Northwest and plans to minor in music theory in college.



JACK WALTERS

Jack, a sophomore, is glad to be a part of Pippin. He has played roles in previous productions, such as Matilda and Twelfth Night. He has also worked backstage as a tech in the Middle School Musical's production of "The Little Mermaid". Jack is looking forward to working in more shows in the future.



LEO WILSON

Leo, a Freshman at West Linn High School, has been doing theater since Middle School. Other shows that Leo has been a part of are Prince Eric in the Middle School Musical's The Little Mermaid and Gaston at Lakewood Theatre in Lake Oswego. He's very excited to be in Pippin as Theo!

Terrific Kidz Childcare
Tamra Buchanan
Owner & Teacher

Office: 503-655-2855
Cell: 503-523-9176
Email: Terrifickidzchildcare@gmail.com
Website: www.terrifickidzchildcare.com

4985 Summit st.
West Linn, OR 97068



Production



ALLIE HENRY

Allie, a senior, has been taking Technical Theatre classes since her freshman year and is now taking Advanced Technical Theatre. Most recently, she was the Production Stage Manager of Shorts 23. She has been an Assistant Stage Manager in Pirates of Penzance and Any Body For Tea, and the Production Stage Manager in Matilda. She is looking forward to continuing learning about technical theater as she pursues higher education.



MADELINE BROWN

Madeline, a senior, is taking Costuming for the Stage this year and is excited to take part in the production of Pippin. Last year, she was honored to be a part of The Odyssey. Madeline is hoping to continue her involvement in the performing arts as she pursues higher education.

BELLAGIOS PIZZA
The Very Best

503.557.1406

1880 Willamette Falls Dr
West Linn, OR 97068

MUSIC & ARTS PARTNERS: FILLING THE GAP.

MAP and the West Linn Community Grant Program have donated \$1500 towards the wireless microphone system rental for previous musical productions.

Over \$94,000 has helped support the WLHS Performing Arts and auditorium through Music and Arts Partners (MAP) in the past 21 years from grants, direct donations, concession profits and naming of WL Heritage Seats in the auditorium. Recent grants have funded costume design, a new black scrim for the stage, two new acoustic shells, \$750 grant was for a dust collection unit for the scene shop's new table saw to improve student health and safety, and a Voice/dialect/text workshop. Nearly \$230,000 has been received by all WLHS arts programs since 1995.

Funding from WL Heritage Seats donations and from the 2006 Sebastian Challenge, provided extras for the new auditorium. A baby grand piano for the stage, new lighting equipment, follow spots, lobby chimes/monitor, one more choral shell, sound mixing equipment and wireless headsets have been added solely with Heritage Seat funds.

You can help by purchasing and naming a WL Heritage Seat in the auditorium. Application forms for individual seats are available in the lobby or at www.musicandartspartners.org.

Have a show on us! Purchase a West Linn Heritage Seat and get two free tickets to any theatre performance in 2023/24!

In June 2018, MAP awarded \$5500 in scholarships to graduating seniors in the arts at West Linn HS and Wilsonville HS, which included a \$1000 Morris Family Theatre Scholarship to WLHS senior and Thespian Troupe 1915 Co-President Brady McDevitt. Other WLHS seniors awarded scholarships were Sheridan Hardy (Morris Band), Claire Newrones, Luukas Lemetyinen, Elizabeth Herrick, and Lauren Griffith. Applications for 2019 MAP scholarships will be available on the MAP website and in the WLHS Career Center in winter of 2019.

District-wide, over \$875,000 has been granted by MAP to all 16 schools, to help fill the funding gaps for arts in our schools. A volunteer, non-profit organization, MAP welcomes your support to benefit this school and any other school your children may attend.

Membership forms are available at the MAP table in the lobby, at the web site www.musicandartspartners.org or call 503-636-4443 for more information.

Please Visit

***www.musicandartspartners.org
for more information, and links to the arts programs
in West Linn-Wilsonville!***



WLWV MAP HERITAGE SEATS

WEST LINN HIGH SCHOOL

Honor a student, your family, a West Linn High School staff member, create a memorial or donate to an auditorium endowment fund.

WLWV MAP Heritage Seats at West Linn High School has been created to raise money for the 600 seat West Linn High School auditorium. These additional funds are used to keep the facility in a state-of-the-art condition by paying for specialty items such as lighting, sound equipment and furnishings.

HOW TO DONATE:

Seat Sponsorship:

Put your name, group name, or the name of anyone you wish to honor on a seat in the WLHS auditorium.

Seats will be named with a brass plate on the armrest for the life of the seat. In addition, you can choose the specific seat or seats that you want to sponsor.

General Donations:

General Donations are also accepted for the Auditorium Endowment Fund. Funds help support the purchase of speciality equipment such as:

- Lighting
- Sound Equipment
- Microphones
- Furnishings
- Lobby Chimes
- Dressing Room Mirrors

To sponsor a seat or make a donation, return a completed form with your tax deductible check payable to:

WL Heritage Seats/MAP
P.O. Box 532
West Linn, OR, 97068

SPONSOR NAME _____

PHONE _____

EMAIL _____

ADDRESS _____

CITY _____

STATE _____ ZIP _____

CHECK THE APPROPRIATE BOXES:

- | | | | |
|--------------------------------------|-------|---|------------|
| <input type="checkbox"/> One Seat | \$150 | <input type="checkbox"/> General Donation | \$ _____ |
| <input type="checkbox"/> Two Seats | \$275 | <input type="checkbox"/> Donation to a | _____ |
| <input type="checkbox"/> Three Seats | \$400 | memorial seat | NAME _____ |
| <input type="checkbox"/> Four Seats | \$500 | | |

TOTAL DONATION AMOUNT \$ _____

SEAT NAMEPLATE TEXT:

LINE 1 _____

LINE 2 _____

LINE 3 _____

NAMEPLATE SUGGESTIONS:

- Line 1: Name of family, student, teacher or anyone you wish to honor
 Line 2: Description, group or association to WLHS community
 Line 3: First year of sponsorship, date of graduation, years of service



QUESTIONS?
Visit musicandartspartners.org or contact
jennylevers@yahoo.com



For the Production...

DIRECTOR.....	Steven Beckingham
CHOREOGRAPHER	Joanna Simnitt
COSTUME DESIGNER.....	Annie Kaiser
VOCAL DIRECTION	Annie Kubitschek
MUSIC DIRECTOR/CONDUCTOR	Kevin Egan
REHEARSAL PIANIST/PIT KEYBOARD.....	Naomi LaViolette, Andrew Bray, Jeffrey Childs
PRODUCTION STAGE MANAGER	Allie Henry
ASSISTANT STAGE MANAGER.....	Madeline Brown
FLY RAIL	Alyssa Chang, Garrett Heaton
HAIR & MAKEUP.....	Lainey Shevlin
WARDROBE	*Larkin Kuehn, Nobie Zur, Eleanora Herman
SET DESIGNER	Jon Ares
SET CONSTRUCTION/PAINTING.....	Members of the <i>Advanced Theatre Production Course</i>
PROPERTIES MASTER	*Gracie Faust
PROPERTIES ASSISTANTS	Marina Vadnais, Marley Fisher, *Olive Dotson
LIGHTING DESIGNER.....	Jon Ares
LIGHT BOARD OPERATOR.....	Keegan Cook
ELECTRICIANS	Garrett Heaton, Gabriel Garrett, Keegan Cook, Curtis Foody
FOLLOWSPOTS.....	*Cadence Cox, Gabriel Garrett
SOUND DESIGN & ENGINEERING	Alex Ogren, Lukas Bono Tavares Davis
MICROPHONE TECH	Austin Rams
SOUND SUPERVISOR	Steven Beckingham
PERFORMING ARTS COORDINATOR	Annie Kaiser
THEATRE ARTS PROGRAM DIRECTOR	Steven Beckingham
TECHNICAL DIRECTOR	Jon Ares
HOUSE MANAGER.....	*Maggie MacKenzie
CONCESSIONS COORDINATOR.....	Annie Kaiser, Sarah Neudeck
BOX OFFICE	Annie Kaiser
ILLUSIONS	Scott Anderson
2D PUPPETS	Dragon Theater Puppets, Portland
SHADOW PUPPETS	*Gracie Faust
PUPPETEERS	*Gracie Faust, *Olive Dotson
HEADSHOTS.....	Ramiro Gomez
POSTER DESIGN	Jonathan Garcia
PROGRAM DESIGN	Steven Beckingham

* Denotes Member of Thespian Troupe 1915, an *International Theatre Honor Society*.

Smile Linn Dental

Family Dental Care
503-607-2222

WEST LINN
18750 SW Willamette Dr.
503.607.2222
SmileLinnDental.com

Dr. Fadi Ibsies
VOTED TOP DENTIST
by Portland Monthly
2010-2023

LAKE OSWEGO
17510 Provost, Ste. 205 (2nd Floor)
503.765.5555
SmileOswegoDental.com

FREE

EXAM & X-RAYS

For new patients without insurance

Smile Oswego Dental • Lake Oswego • 503.765.5555
Smile Linn Dental • West Linn • 503.607.2222
With this coupon. Not valid with other offers
or prior purchases. Offer expires 10/15/23



FREE

TEETH WHITENING

New patient only with exam,
FM X-rays & Cleaning (\$300 Value)

Smile Oswego Dental • Lake Oswego • 503.765.5555
Smile Linn Dental • West Linn • 503.607.2222
With this coupon. Not valid with other offers
or prior purchases. Offer expires 10/15/23



SomethingBluePhotography.com

Book your session online or come
to the Studio and Portrait Garden for a mini tour .



Denyce
503-232-6836

info@sbluephoto.com



World HeARTs

a fair trade boutique



1833 Willamette Falls Drive West Linn, OR 97068
Located in Historic Willamette

*Handcrafted * Fair Trade * Ethically & Sustainably Made*

Our Mission - We put people and planet before profits and provide our community an opportunity to *Shop with Intention* and *Give with Purpose*.

World HeARTs offers a curated selection of *Global Goods that Nourish the Soul*. Jewelry, accessories, home goods, games, foods and gifts for everyone - including you!

Our World HeARTs family wishes the WLHS Performing Arts students a fun and successful season!

FB & IG @worldheartsfairtrade

www.worldheartsfairtrade.com - Local Delivery Available

CAMP CENTER STAGE

JULY 28 - AUGUST 3, 2024



OREGON'S PREMIERE OVERNIGHT THEATER SUMMER CAMP

WWW.CENTERSTAGETHEATRICS.ORG



San Blas

a family mexican restaurant

21550 Salamo Rd, West Linn, OR 97068

Nature's Pet

NUTRITION CENTER & WELLNESS SPA

-  Holistically Minded Pet Nutrition
-  Grooming
-  Supplies

"May your performance shine as
bright as the spotlight"

5656 Hood St, ste. 101
West Linn, OR 97068
503-305-8628

NaturesPetMarket.com/WestLinn
NaturesPetWestLinn@gmail.com
facebook.com/NaturesPetMarketWestLinn



AUTOGRAPHS



Finest, Freshest, Prepared Daily
Order Online at www.BajaFreshLO.com

17805 SW 65th Ave, Lake Oswego
(I-5 & Boones Ferry)
503-620-6732

Bring this Ad & Receive our FRESH Made Pronto Guacamole Free
No Purchase Necessary. Expires 11/30/22

Happy Valley

9993 SE 82nd Ave
Happy Valley, OR
503 774-1101



Home Cooking Served Daily Since 2016

Tualatin Location Coming Soon

Open Everyday 7am-3pm

Bring in this ad and receive a complimentary homemade breadpudding
No purchase necessary. Expires 11/30/2022

Fisher's Landing

1801 SE 164th Ave
Vancouver, WA
360 828-7515

SAFE SPACE



Our theatre is a safe space for all people, no matter their race, religion, gender identity, sexual orientation, ability, age, or background.